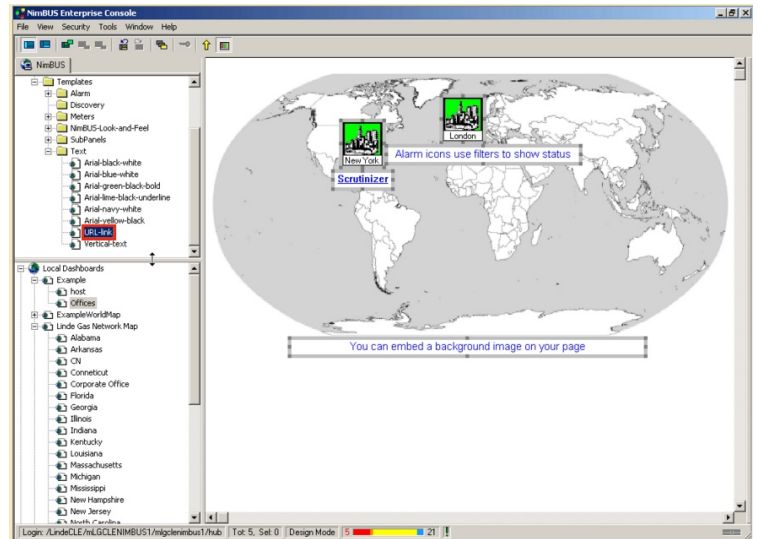
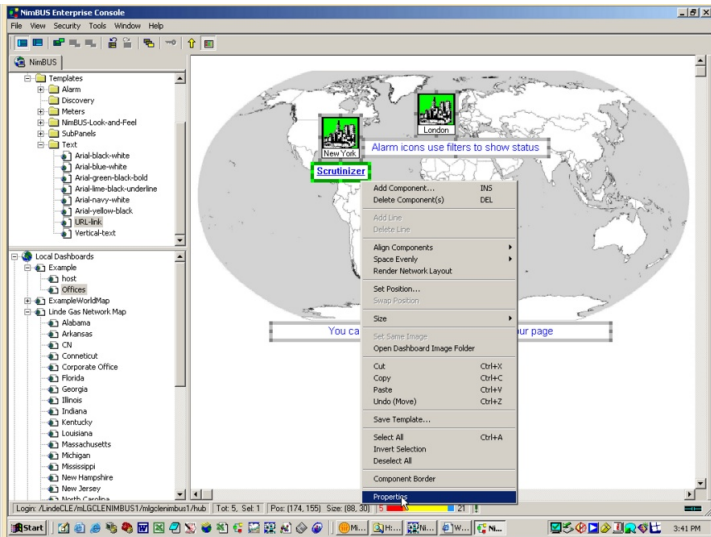


Scrutinizer Integration with NimBus™ from NimSoft™

In NimBus, bring up the selected map in edit mode that you want to put a Scrutinizer hyperlink in. Drag over a “URL link” from the menu on the left.

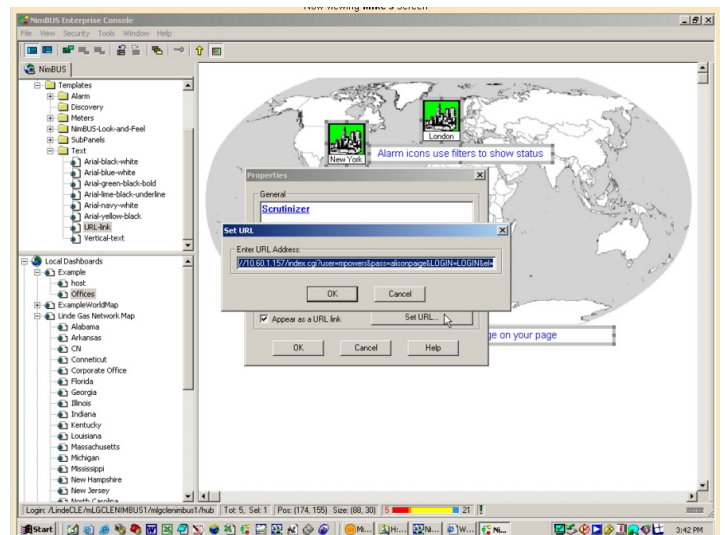
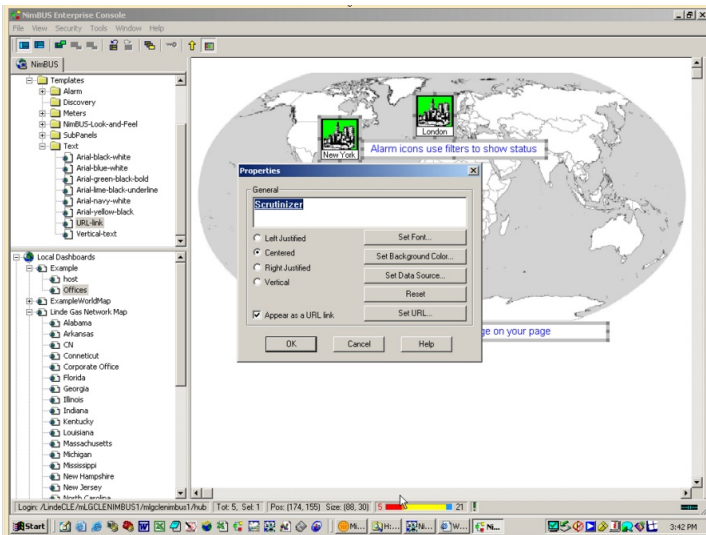


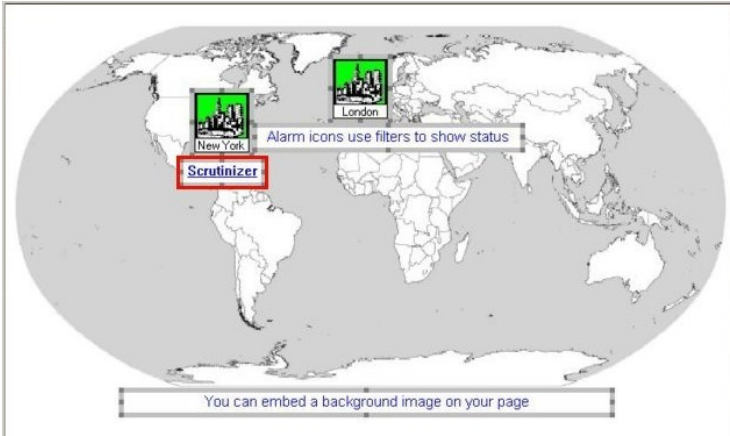
Right mouse button on the link labeled below as Scrutinizer and select “Properties” from the pop up menu.



Enter a General name for the link: “Scrutinizer” will work fine. Then click on “Set URL”.

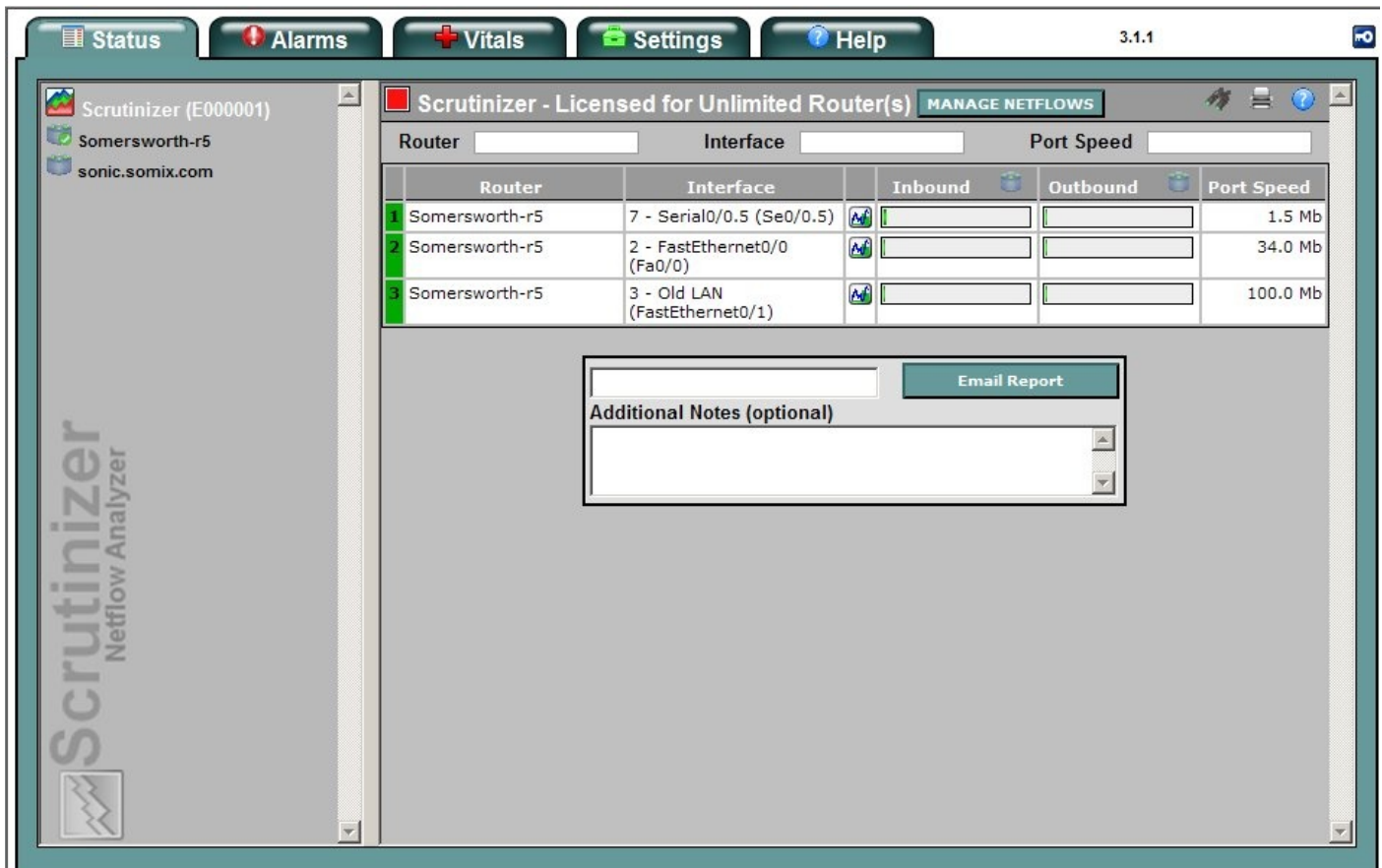
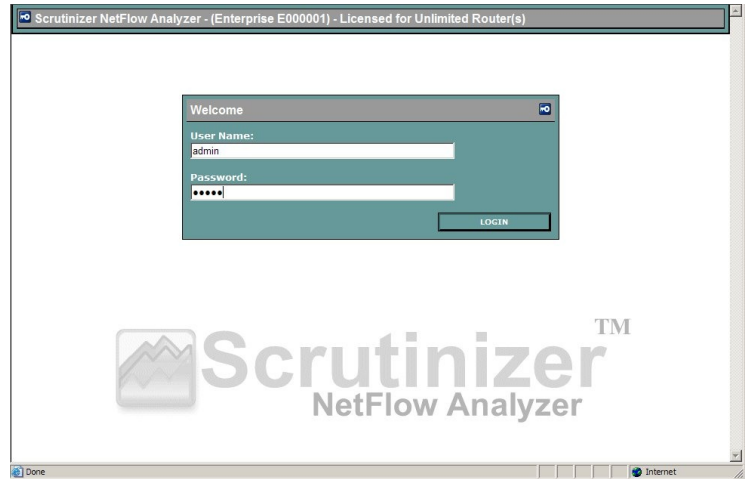
Enter the URL to the Scrutinizer web server as shown below. Then click “OK”.





From the Nimbus web interface, click on the Scrutinizer icon below to launch the web interface of the Scrutinizer server.

Below, the web interface of Scrutinizer will prompt you for a login and password. There are ways to pass the login and password in the URL. Call plixer for tips on how to configure this.



Remember, for further help integrating Scrutinizer with NimSoft's NimBUS™, contact Plixer support.